

CHEMICAL ANALYSIS AND MECHANICAL MILL TEST CERTIFICATE (EN 10204-3.1)

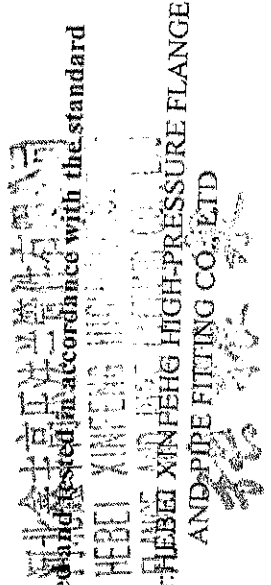
This to certify that in accordance with the relevant product specifications, technique conditions and contract stipulations, the flanges were tested qualified by our quality control department

CLIENT: Unimech Engineering (M) Sdn. Bhd
 CONTRACT NO: ZPO-2104-0014
 CERTIFICATE REF. NO: XF-UJEM21-09
 DATE OF REPORT: 2021-6-6
 MARK OF MANUFACTURER: XF

Item No.	Name	Size	QTY/PC	Material	Heat No	Physical properties										Chemical Analyses									
						TS	YS	E	R	H	C	Mn	P	S	Si	Cu	Ni	Cr	Mo						
1	SORF PN16 FLANGE EN1092-1 TYPE12	1/2"	50	ST37.2	38860	475	243	33	42	165	0.14	0.49	0.013	0.009	0.12	/	/	0.12	/	/	0.12	/			
2	SORF PN16 FLANGE EN1092-1 TYPE12	3/4"	100	ST37.2	38860	475	243	33	42	165	0.14	0.49	0.013	0.009	0.12	/	/	0.12	/	/	0.12	/			
3	SORF PN16 FLANGE EN1092-1 TYPE12	1"	200	ST37.2	38860	475	243	33	42	165	0.14	0.49	0.013	0.009	0.12	/	/	0.12	/	/	0.12	/			
4	SORF PN16 FLANGE EN1092-1 TYPE12	1.1/2"	50	ST37.2	38860	475	243	33	42	165	0.14	0.49	0.013	0.009	0.12	/	/	0.12	/	/	0.12	/			
5	SORF PN16 FLANGE EN1092-1 TYPE12	2"	120	ST37.2	38860	475	243	33	42	165	0.14	0.49	0.013	0.009	0.12	/	/	0.12	/	/	0.12	/			
6	SORF PN16 FLANGE EN1092-1 TYPE12	5"	80	ST37.2	38860	475	243	33	42	165	0.14	0.49	0.013	0.009	0.12	/	/	0.12	/	/	0.12	/			
7	PN40 SORF FLANGE EN1092-1 TYPE12	4"	30	ST37.2	38860	475	243	33	42	165	0.14	0.49	0.013	0.009	0.12	/	/	0.12	/	/	0.12	/			
8	PN40 SORF FLANGE EN1092-1 TYPE12	12"	12	ST37.2	38860	475	243	33	42	165	0.14	0.49	0.013	0.009	0.12	/	/	0.12	/	/	0.12	/			
9	ASA150 SORF FLANGE	2"	600	A105	56930	488	250	31	43	163	0.15	0.62	0.012	0.008	0.13	0.12	/	0.12	/	/	0.12	/			
10	ASA150 SORF FLANGE	4"	600	A105	56930	488	250	31	43	163	0.15	0.62	0.012	0.008	0.13	0.12	/	0.12	/	/	0.12	/			
11	ASA150 BLIND FLANGE	6"	34	A105	56930	488	250	31	43	163	0.15	0.62	0.012	0.008	0.13	0.12	/	0.12	/	/	0.12	/			
12	ASA150 SWRF FLANGE	2"	100	A105	56930	488	250	31	43	163	0.15	0.62	0.012	0.008	0.13	0.12	/	0.12	/	/	0.12	/			
13	ASA300 SORF FLANGE	1/2"	20	A105	56930	488	250	31	43	163	0.15	0.62	0.012	0.008	0.13	0.12	/	0.12	/	/	0.12	/			
14	ASA300 SORF FLANGE	3/4"	20	A105	56930	488	250	31	43	163	0.15	0.62	0.012	0.008	0.13	0.12	/	0.12	/	/	0.12	/			
15	ASA300 SORF FLANGE	1"	30	A105	56930	488	250	31	43	163	0.15	0.62	0.012	0.008	0.13	0.12	/	0.12	/	/	0.12	/			
TOTAL			2046																						

Visual examination Without Complaint
 Dimensional inspection Without Complaint
 Surface crack inspection Without Complaint

We hereby certify that product described herein have been manufactured, sampled, inspected and tested in accordance with the standard and also with the purchaser's requirements and the result is acceptable.



INSPECTOR: 赵之强

Manufacturer: HEBEI XINPEHG HIGH-PRESSURE FLANGE AND PIPE FITTING CO., LTD

CHEMICAL ANALYSIS AND MECHANICAL MILL TEST CERTIFICATE (EN 10204-3.1)

This to certify that in accordance with the relevant product specifications, technique conditions and contract stipulations, the flanges were tested qualified by our quality control department

CLIENT: Unimech Engineering (M) Sdn. Bhd		CERTIFICATE REF NO: XF-UEM21-09																		
CONTRACT NO: ZPO-2104-0014		DATE OF REPORT: 2021-8-20																		
GOOD DESCRIPTION: 886PCS OF FLANGE		MARK OF MANUFACTURER: XF																		
Item No.	Name	Size	QTY/PC	Material	Physical properties							Chemical Analyses								
					Heat No	TS	YS	E	R	H	C	Mn	P	S	Si	Cu	Ni	Cr	Mo	
9	ASA150 SORF FLANGE	2"	200	A105	56930	488	250	31	43	163	0.15	0.62	0.012	0.008	0.13	0.12	0.11	0.12	0.02	
11	ASA150 SORF FLANGE	8"	250	A105	56930	488	250	31	43	163	0.15	0.62	0.012	0.008	0.13	0.12	0.11	0.12	0.02	
12	ASA150 BLIND FLANGE	6"	126	A105	56930	488	250	31	43	163	0.15	0.62	0.012	0.008	0.13	0.12	0.11	0.12	0.02	
13	ASA150 WNRF FLANGE	2"	80	A105	56930	488	250	31	43	163	0.15	0.62	0.012	0.008	0.13	0.12	0.11	0.12	0.02	
14	ASA150 WNRF FLANGE	10"	10	A105	56930	488	250	31	43	163	0.15	0.62	0.012	0.008	0.13	0.12	0.11	0.12	0.02	
19	ASA300 SORF FLANGE	2"	100	A105	56930	488	250	31	43	163	0.15	0.62	0.012	0.008	0.13	0.12	0.11	0.12	0.02	
20	ASA300 SORF FLANGE	3"	80	A105	56930	488	250	31	43	163	0.15	0.62	0.012	0.008	0.13	0.12	0.11	0.12	0.02	
21	ASA300 SORF FLANGE	4"	10	A105	56930	488	250	31	43	163	0.15	0.62	0.012	0.008	0.13	0.12	0.11	0.12	0.02	
22	ASA300 SORF FLANGE	8"	30	A105	56930	488	250	31	43	163	0.15	0.62	0.012	0.008	0.13	0.12	0.11	0.12	0.02	
TOTAL			886																	

Visual examination
Dimensional inspection
Surface crack inspection:

Without Complaint
Without Complaint
Without Complaint

We hereby certify that product described herein have been manufactured, sampled, inspected and tested in accordance with the standard and also with the purchaser's requirements and the result is acceptable.

INSPECTOR: 赵之强

河北鑫丰高压法兰管件有限公司
Manufacturer: HEBEI XINFENG HIGH-PRESSURE FLANGE
HEBEI XINFENG PIPE FITTING CO., LTD
FLANGE AND PIPE FITTING CO., LTD



CHEMICAL ANALYSIS AND MECHANICAL MILL TEST CERTIFICATE (EN 10204-3.1)

This to certify that in accordance with the relevant product specifications, technique conditions and contract stipulations, the flanges were tested qualified by our quality control department

CLIENT: Umimech Engineering (M) Sdn. Bhd	CERTIFICATE REF. NO.: XF-UEM21-19
CONTRACT NO.: XF-UEM21-19	DATE OF REPORT: 2021-11-15
GOOD DESCRIPTION: 1595 PCS OF FLANGE	
MARK OF MANUFACTURER: XF	

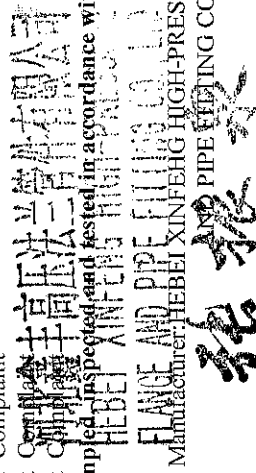
Item No.	Flange Name	Size	QTY/PC	Material	Heat No	TS	YS	E	R	H	C	Mn	P	S	Chemical Analyses					
															Si	Cu	Ni	Cr	Mo	
1	EN1092-1 TYPE11 PN16	1"	30	ST37.2	38850	467	244	29	41	168	0.14	0.45	0.011	0.013	0.13	/	/	/	0.12	/
2	EN1092-1 TYPE11 PN16	2"	70	ST37.2	38850	467	244	29	41	168	0.14	0.45	0.011	0.013	0.13	/	/	/	0.12	/
3	EN1092-1 TYPE12 PN16	1.1/2"	50	ST37.2	38850	467	244	29	41	168	0.14	0.45	0.011	0.013	0.13	/	/	/	0.12	/
4	EN1092-1 TYPE12 PN16	2"	400	ST37.2	38850	467	244	29	41	168	0.14	0.45	0.011	0.013	0.13	/	/	/	0.12	/
5	EN1092-1 TYPE12 PN16	2.1/2"	60	ST37.2	38850	467	244	29	41	168	0.14	0.45	0.011	0.013	0.13	/	/	/	0.12	/
6	EN1092-1 TYPE12 PN16	6"	20	ST37.2	38850	467	244	29	41	168	0.14	0.45	0.011	0.013	0.13	/	/	/	0.12	/
7	EN1092-1 TYPE05 PN16	4"	30	ST37.2	38850	467	244	29	41	168	0.14	0.45	0.011	0.013	0.13	/	/	/	0.12	/
8	EN1092-1 TYPE05 PN16	6"	20	ST37.2	38850	467	244	29	41	168	0.14	0.45	0.011	0.013	0.13	/	/	/	0.12	/
9	EN1092-1 TYPE05 PN16	8"	25	ST37.2	38850	467	244	29	41	168	0.14	0.45	0.011	0.013	0.13	/	/	/	0.12	/
10	EN1092-1 TYPE05 PN16	12"	5	ST37.2	38850	467	244	29	41	168	0.14	0.45	0.011	0.013	0.13	/	/	/	0.12	/
11	EN1092-1 TYPE11 PN40	1"	30	ST37.2	38850	467	244	29	41	168	0.14	0.45	0.011	0.013	0.13	/	/	/	0.12	/
12	EN1092-1 TYPE11 PN40	1.1/2"	30	ST37.2	38850	467	244	29	41	168	0.14	0.45	0.011	0.013	0.13	/	/	/	0.12	/
13	EN1092-1 TYPE11 PN40	2.1/2"	40	ST37.2	38850	467	244	29	41	168	0.14	0.45	0.011	0.013	0.13	/	/	/	0.12	/
14	EN1092-1 TYPE12 PN40	6"	10	ST37.2	38850	467	244	29	41	168	0.14	0.45	0.011	0.013	0.13	/	/	/	0.12	/
15	EN1092-1 TYPE12 PN40	10"	20	ST37.2	38850	467	244	29	41	168	0.14	0.45	0.011	0.013	0.13	/	/	/	0.12	/
16	ASA150 SORF FLANGE	1/2"	100	A105	47787	495	252	29	35	169	0.21	0.65	0.012	0.014	0.13	0.12	0.11	0.13	0.003	0.003
17	ASA150 SORF FLANGE	2.1/2"	200	A105	47787	495	252	29	35	169	0.21	0.65	0.012	0.014	0.13	0.12	0.11	0.13	0.003	0.003
18	ASA150 SORF FLANGE	5"	100	A105	47787	495	252	29	35	169	0.21	0.65	0.012	0.014	0.13	0.12	0.11	0.13	0.003	0.003
19	ASA150 SORF FLANGE	6"	100	A105	47787	495	252	29	35	169	0.21	0.65	0.012	0.014	0.13	0.12	0.11	0.13	0.003	0.003
20	ASA150 SORF FLANGE	16"	10	A105	47787	495	252	29	35	169	0.21	0.65	0.012	0.014	0.13	0.12	0.11	0.13	0.003	0.003
21	ASA150 BLIND FLANGE	5"	50	A105	47787	495	252	29	35	169	0.21	0.65	0.012	0.014	0.13	0.12	0.11	0.13	0.003	0.003
22	ASA150 SWRF FLANGE	3"	70	A105	47787	495	252	29	35	169	0.21	0.65	0.012	0.014	0.13	0.12	0.11	0.13	0.003	0.003
23	ASA150 SWRF FLANGE	4"	20	A105	47787	495	252	29	35	169	0.21	0.65	0.012	0.014	0.13	0.12	0.11	0.13	0.003	0.003
24	ASA300 BLIND (RF) FLANGE	1.1/2"	50	A105	47787	495	252	29	35	169	0.21	0.65	0.012	0.014	0.13	0.12	0.11	0.13	0.003	0.003
25	ASA300 BLIND (RF) FLANGE	1/2"	20	A105	47787	495	252	29	35	169	0.21	0.65	0.012	0.014	0.13	0.12	0.11	0.13	0.003	0.003
26	ASA300 WNRF (SCH80) FLANGE	1"	10	A105	47787	495	252	29	35	169	0.21	0.65	0.012	0.014	0.13	0.12	0.11	0.13	0.003	0.003
27	ASA600 SORF FLANGE	3"	5	A105	47787	495	252	29	35	169	0.21	0.65	0.012	0.014	0.13	0.12	0.11	0.13	0.003	0.003
28	ASA600 WNRF FLANGE	1"	10	A105	47787	495	252	29	35	169	0.21	0.65	0.012	0.014	0.13	0.12	0.11	0.13	0.003	0.003
29	ASA600 WNRF FLANGE	6"	10	A105	47787	495	252	29	35	169	0.21	0.65	0.012	0.014	0.13	0.12	0.11	0.13	0.003	0.003
TOTAL			1595																	

Visual examination
Dimensional inspection
Surface crack inspection:

Without Complaint
Without Complaint
Without Complaint

We hereby certify that product described herein have been manufactured, sampled, inspected and tested in accordance with the standard and also with the purchaser's requirements and the result is acceptable.

INSPECTOR: 赵之强



 HEBEI XINFEIG HIGH-PRESSURE PIPE CO., LTD.
 FLANGE AND PIPE FILLING CO., LTD.
 Manufacturer: HEBEI XINFEIG HIGH-PRESSURE FLANGE