

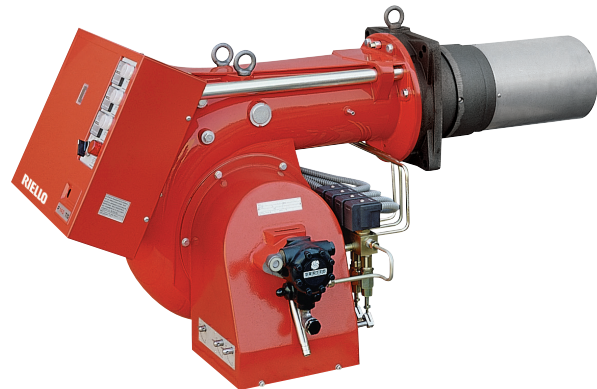
## PRESS T/G SERIES

The PRESS T/G series of burners covers a firing range from 830 to 5340 kW.

Available in 4 different models, this burners are particularly well suited for matching with pressurized chamber boilers. For their characteristics, they find application in big civil plants for domestic heating or in industrial applications where thermal load is repetitive and predictable.

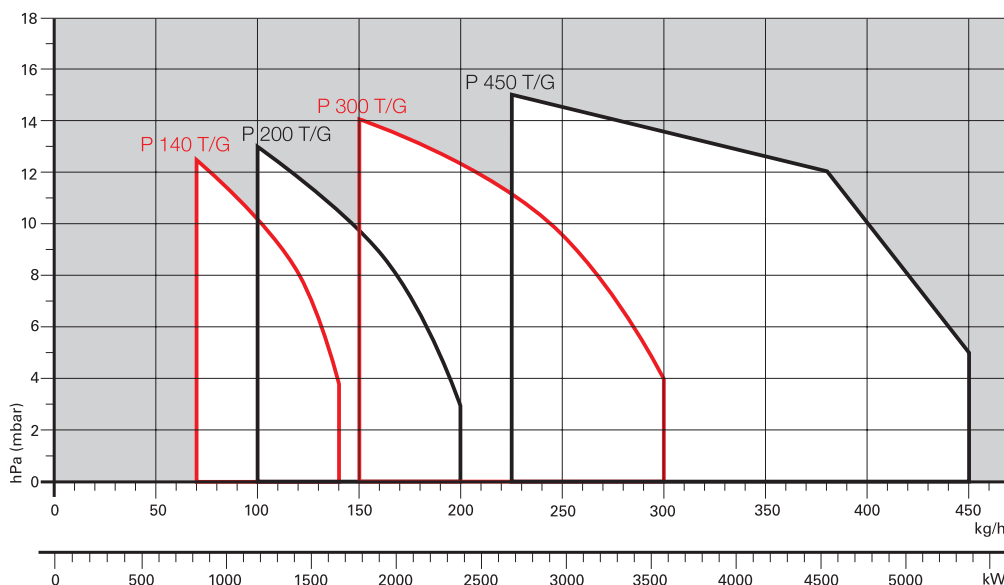
An hydraulic ram exclusive system, with 3 adjustable positions, regulates dampers opening, allowing air passage in relation to output required: in this way flame stability is optimized in every working point, with micro-regulation available.

The burners are fitted with a microprocessor-based burner safety control box which supplies indication of operation and diagnosis of fault cause.



P 140 T/G	380/830 ÷ 1660	kW
P 200 T/G	557/1186 ÷ 2372	kW
P 300 T/G	712/1779 ÷ 3560	kW
P 450 T/G	890/2670 ÷ 5340	kW

## FIRING RATES



Useful working field for choosing the burner

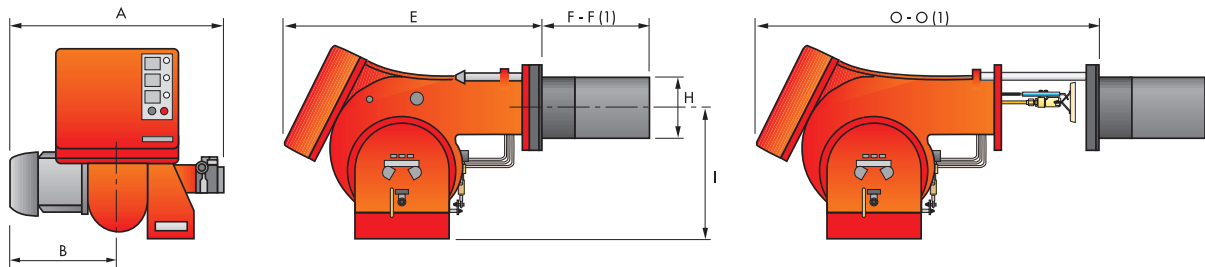
Test conditions conforming to EN267  
 Temperature: 20°C  
 Pressure: 1013,5 mbar  
 Altitude: 0 m a.s.l.

# Three Stage Light Oil Burners

## PRESS T/G SERIES

### Overall dimensions (mm)

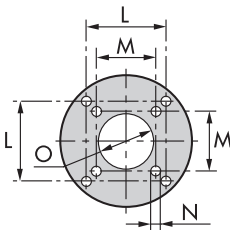
#### BURNER



MODEL	A	B	E	F - F (1)	H	I	O - O (1)
▶ P 140 T/G	765	365	890	363 - 473	222	467	1250 - 1360
▶ P 200 T/G	796	396	890	391 - 501	250	467	1280 - 1390
▶ P 300 T/G	858	447	1000	444 - 574	295	496	1440 - 1570
▶ P 450 T/G	950	508	1070	476 - 606	336	525	1546 - 1676

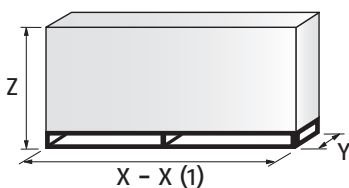
(1) Length with extended combustion head.

#### BURNER - BOILER MOUNTING FLANGE



MODEL	L	M	N	O
▶ P 140 T/G	260	230	M14	225
▶ P 200 T/G	260	-	M16	255
▶ P 300 T/G	260	-	M18	300
▶ P 450 T/G	310	-	M20	340

#### PACKAGING



MODEL	X - X (1)	Y	Z	kg
▶ P 140 T/G	1740	990	950	130
▶ P 200 T/G	1740	990	950	220
▶ P 300 T/G	2040	1180	1125	238
▶ P 450 T/G	2040	1180	1125	300

(1) Length with extended combustion head.

# Three Stage Light Oil Burners

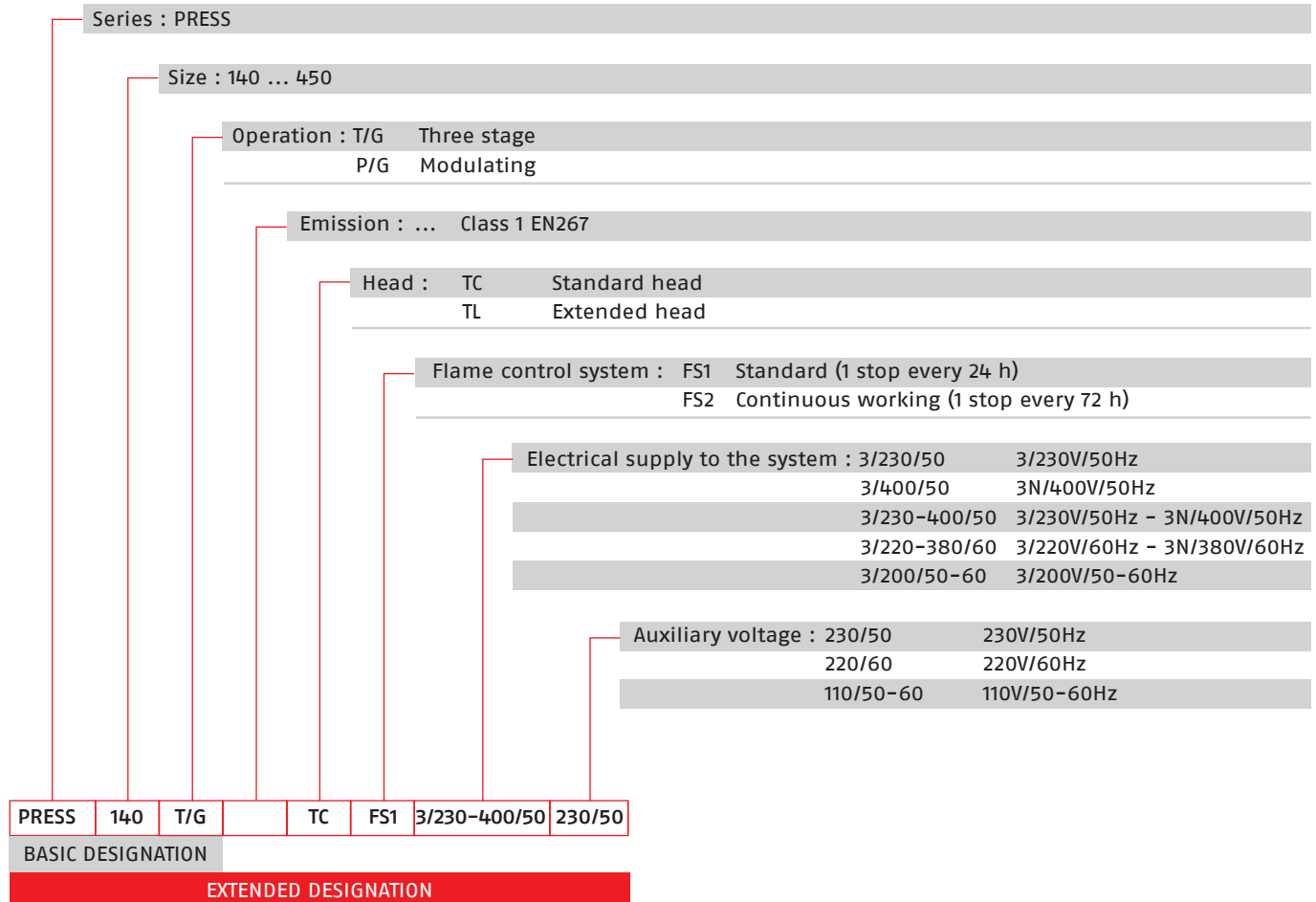
## PRESS T/G SERIES

**RIELLO**

# Specification

## DESIGNATION OF SERIES

LIGHT OIL



# Three Stage Light Oil Burners

## PRESS T/G SERIES

### Specification

#### STATE OF SUPPLY

Monoblock forced draught oil burner with three stage operation, fully automatic, made up of:

- Air suction circuit lined with sound-proofing material
- Fan with forward curved blades high performance pressure levels
- Air dampers for air setting controlled by a three stage hydraulic ram
- Starting motor at 2850 rpm, three-phase 400 V with neutral, 50 Hz
- Combustion head, that can be set on the basis of the combustion output, fitted with:
  - stainless steel end cone, resistant to corrosion and high temperatures
  - ignition electrodes
  - flame stability disk
- Gears pump for high pressure fuel supply, fitted with:
  - filter
  - pressure regulator
  - connections for installing a pressure gauge and vacuumeter
  - internal by-pass for single pipe installation
- Valve unit with a oil safety valve and three oil delivery valves on the output circuit;
- Photocell for flame detection
- Microprocessor based burner safety control box, with diagnostic function
- Burner on/off switch
- Flame inspection window
- Slide bars for easier installation and maintenance
- Protection filter against radio interference
- IP X0D (IP 40) electric protection level.

#### Standard equipment:

- 2 flexible pipes for connection to the oil supply network
- 2 nipples for the connection to the pump
- 4 wiring looms fittings for electrical connections
- 4 screws for fixing the burner flange to the boiler
- 2 slide bar extensions (for the extended model of P 300 T/G and P 450 T/G)
- Gasket for flange
- 1 Star Delta starter (On models where provided)
- Diffuser disk (P 450 T/G)
- Instruction handbook for installation, use and maintenance
- Spare parts catalogue.

# Three Stage Light Oil Burners

## PRESS T/G SERIES

**RIELLO**

### Available models

CODE	MODEL	HEAT OUTPUT		TOTAL ELECTRICAL POWER (kW)	CERTIFICATION	NOTE
		(kW)	(kg/h)			
3476823	PRESS 140 T/G TC FS1 3/230-400/50 230/50	380/830÷1660	32/70÷140	5.2	CE-0441/B	
3476824	PRESS 140 T/G TL FS1 3/230-400/50 230/50	380/830÷1660	32/70÷140	5.2	CE-0441/B	
3476885	PRESS 140 T/G TC FS1 3/220-380/60 220/60	380/830÷1660	32/70÷140	5.2	-	
3476886	PRESS 140 T/G TL FS1 3/220-380/60 220/60	380/830÷1660	32/70÷140	5.2	-	
3477723	PRESS 200 T/G TC FS1 3/230-400/50 230/50	557/1186÷2372	47/100÷200	5,3	CE-0441/B	
3477724	PRESS 200 T/G TL FS1 3/230-400/50 230/50	557/1186÷2372	47/100÷200	5,3	CE-0441/B	
3477785	PRESS 200 T/G TC FS1 3/220-380/60 220/60	557/1186÷2372	47/100÷200	5,3	-	
3477786	PRESS 200 T/G TL FS1 3/220-380/60 220/60	557/1186÷2372	47/100÷200	5,3	-	
3478837	PRESS 300 T/G TC FS1 3/230-400/50 230/50	712/1779÷3560	60/150÷300	10.9	CE-0441/B	
3478838	PRESS 300 T/G TL FS1 3/230-400/50 230/50	712/1779÷3560	60/150÷300	10.9	CE-0441/B	
3478839	PRESS 300 T/G TC FS1 3/230/50 230/50	712/1779÷3560	60/150÷300	10.9	CE-0441/B	(1)
3478840	PRESS 300 T/G TL FS1 3/230/50 230/50	712/1779÷3560	60/150÷300	10.9	CE-0441/B	(1)
3478841	PRESS 300 T/G TC FS1 3/400/50 230/50	712/1779÷3560	60/150÷300	10.6	CE-0441/B	(1)
3478842	PRESS 300 T/G TL FS1 3/400/50 230/50	712/1779÷3560	60/150÷300	10.6	CE-0441/B	(1)
3478985	PRESS 300 T/G TC FS1 3/220-380/60 220/60	712/1779÷3560	60/150÷300	10.7	-	
3478986	PRESS 300 T/G TL FS1 3/220-380/60 220/60	712/1779÷3560	60/150÷300	10.7	-	
3479336	PRESS 450 T/G TC FS1 3/230/50 230/50	890/2670÷5340	75/225÷450	16.9	CE 1002/R	(1)
3479337	PRESS 450 T/G TL FS1 3/230/50 230/50	890/2670÷5340	75/225÷450	16.9	CE 1002/R	(1)
3479338	PRESS 450 T/G TC FS1 3/400/50 230/50	890/2670÷5340	75/225÷450	16.9	CE 1002/R	(1)
3479339	PRESS 450 T/G TL FS1 3/400/50 230/50	890/2670÷5340	75/225÷450	16.9	CE 1002/R	(1)

(1) Star-delta starting, as standard equipment

Net calorific value: 11,8 kWh/kg - 10200 kcal/kg - Viscosity at 20°C: 4÷6 mm<sup>2</sup>/s (cSt)

The burners of PRESS series are in according to 2004/108 - 2006/95 - 2006/42 EC Directive and EN 267 Norm.

# Three Stage Light Oil Burners

## PRESS T/G SERIES

### Burner accessories

#### Nozzles



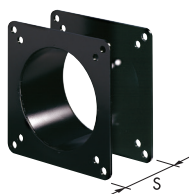
The following list shows the features and codes on the basis of the maximum required fuel output.

NOTE: each burner needs N° 3 nozzles.

BURNER	GPH	RATED OUTPUT [kg/h]			NOZZLE CODE
		at 10 bar	at 12 bar	at 14 bar	
▶ P 140 T/G	3,50	13,5	14,8	16,1	3042162
▶ P 140 T/G	4,00	15,4	17	18,4	3042172
▶ P 140 T/G	4,50	17,3	19,1	20,7	3042182
▶ P 140 T/G - P 200 T/G	5,00	19,2	21,2	23	3042192
▶ P 140 T/G - P 200 T/G	5,50	21,1	23,3	25,3	3042202
▶ P 140 T/G - P 200 T/G	6,00	23,1	25,5	27,7	3042212
▶ P 140 T/G - P 200 T/G	6,50	25	27,6	30	3042222
▶ P 140 T/G - P 200 T/G	7,00	26,9	29,7	32,3	3042232
▶ P 140 T/G - P 200 T/G	7,50	28,8	31,8	34,6	3042242
▶ P 140 T/G - P 200 T/G	8,00	30,8	33,9	36,9	3042252
▶ P 140 T/G - P 200 T/G	8,50	32,7	36,1	39,2	3042262
▶ P 140 T/G - P 200 T/G	9,50	36,5	40,3	43,8	3042282
▶ P 140 T/G - P 200 T/G	10,00	38,4	42,4	46,1	3042292
▶ P 140 T/G - P 200 T/G	11,00	42,3	46,7	50,7	3042312
▶ P 200 T/G	12,00	46,1	50,9	55,3	3042322
▶ P 200 T/G	13,00	50	55,1	59,9	3042332
▶ P 200 T/G - P 300 T/G	14,00	53,8	59,4	64,5	3042352
▶ P 200 T/G - P 300 T/G	15,00	57,7	63,6	69,2	3042362
▶ P 300 T/G	16,00	61,5	67,9	73,8	3042382
▶ P 300 T/G	17,00	65,4	72,1	78,4	3042392
▶ P 300 T/G - P 450 T/G	18,00	69,2	76,4	83	3042412
▶ P 300 T/G - P 450 T/G	19,00	73	80,6	87,6	3042422
▶ P 300 T/G - P 450 T/G	20,00	76,9	84,8	92,2	3042442
▶ P 300 T/G - P 450 T/G	22,00	84,6	93,3	101,4	3042462
▶ P 300 T/G - P 450 T/G	24,00	92,2	101,8	110,6	3042472
▶ P 450 T/G	26,00	99,9	110,3	119,9	3042482
▶ P 450 T/G	28,00	107,6	118,8	129,1	20018051
▶ P 450 T/G	30,00	110,4	122	132,4	3042502
▶ P 450 T/G	32,00	117,8	130,1	150,1	3042512
▶ P 450 T/G	35,00	128,8	142,1	154,5	3042522

## Burner accessories

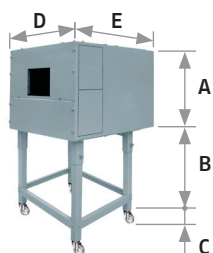
### Spacer kit



If burner head penetration into the combustion chamber needs reducing, varying thickness spacers are available, as given in the following list.

BURNER	SPACER THICKNESS S (mm)	KIT CODE
▶ P 140 T/G	102	3000722
▶ P 200 T/G	102	3000722
▶ P 300 T/G	130	3000723
▶ P 450 T/G	130	3000751

### Sound proofing box

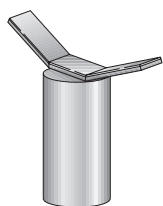


If noise emission needs reducing even further, sound-proofing boxes are available. In case of generator heights, where a lower dimension "B" is required, ask for the Box Support Kit code 20065135. The useful dimensions are 40 mm less than the total dimensions indicated in the table (A, D, E). Not suitable for outdoor use.

BURNER	BOX TYPE	A (mm)	B (mm) min-max	C (mm)	D (mm)	E (mm)	[dB(A)] (*)	BOX CODE
▶ P 140 T/G ▶ P 200 T/G	C4/5	850	160 - 980	110	980	930	10	3010404
▶ P 300 T/G ▶ P 450 T/G	C7	1255	160 - 980	110	1140	1345	10	3010376

(\*) Average noise reduction according to EN 15036-1 standard

### Burner support



For easier maintenance, a mobile burner support has been designed, which means the burner can be dismantled without the need of forklift trucks.

BURNER	SUPPORT CODE
▶ P 300 T/G - P 450 T/G	3000731

# Three Stage Light Oil Burners

## PRESS T/G SERIES

### Burner accessories

#### PC Interface kit



To connect the control box to a personal computer for the transmission of operation, fault signals and detailed service information, an interface adapter with PC software are available.

BURNER	KIT CODE
► P 140 T/G - P 200 T/G - P 300 T/G - P 450 T/G	3002719

#### Protection kit (electromagnetic interferences)

When the burner is installed in a room particularly subject to electromagnetic interference (signals emitted over 10 V/m) due for example to INVERTER presence or in systems where the lengths of the thermostat connections is over 20 meters, this specific protection kit is available as an interface between the thermostatic controls and the burner.

BURNER	KIT CODE
► All models	3010386