



JABATAN KESELAMATAN DAN KESIHATAN PEKERJAAN MALAYSIA
DEPARTMENT OF OCCUPATIONAL SAFETY AND HEALTH MALAYSIA

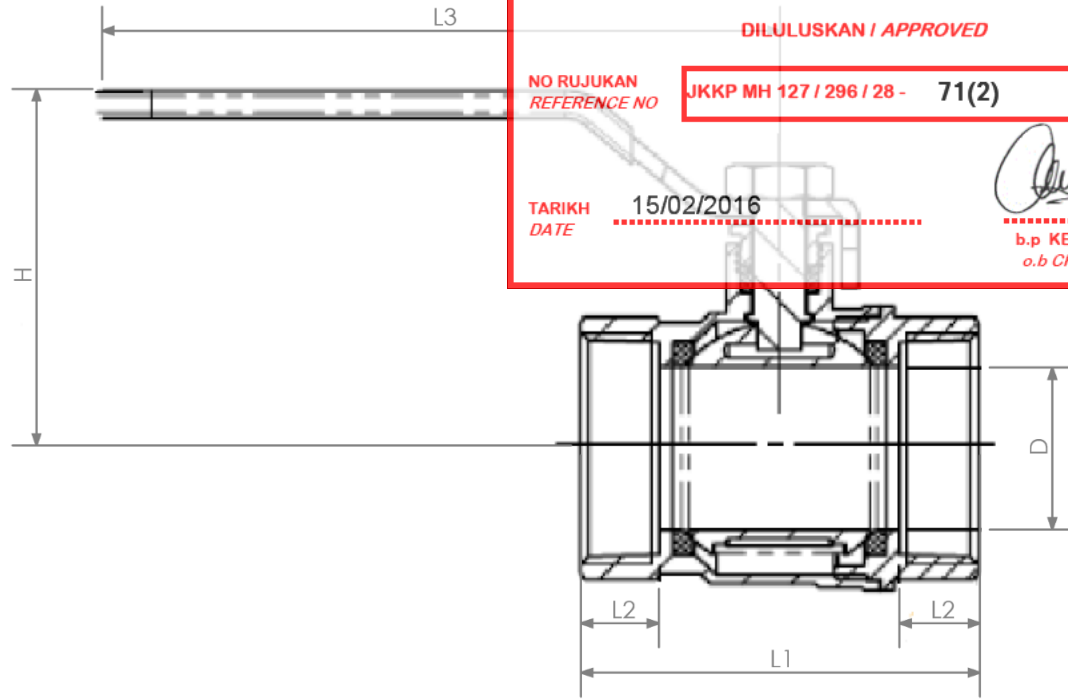
DILULUSKAN / APPROVED

NO RUJUKAN
REFERENCE NO

JKKP MH 127 / 296 / 28 - 71(2)

TARIKH
DATE 15/02/2016

b.p KETUA PEMERIKSA
o.b CHIEF INSPECTOR



Application

Cold and hot water installation
Oil and inflammable gasses
Natural gas
Pressurized air
Hot steam
LPG

Test Pressure

Working pressure : 40 kgf/cm² (600psi)
Temperature max. :150 °C
Hydrostatic shell test : 4.12 Mpa (42 kgf/cm²)
Pneumatic seat test : 0.59 Mpa (6 kgf/cm²)

Features

Threaded ends to BSPT (BS21) or NPT (ANSI B1.20.1)
Face-to-Face or End to End

Materials

No.	Part	Material
1	Bonnet	Brass
2	Ball Seat	PTFE
3	Ball	Stainless Steel
4	Body	Brass
5	Packing Gland	PTFE
6	Packing Nut	Brass
7	Handle	C.P. Steel
8	Gasket	Steel
9	Packing Nut	N.P. Steel
10	Stem	Brass

Dimensions (mm)

Size	inch	1/4	3/8	1/2	3/4	1	1 1/4	1 1/2	2
	mm	8	10	15	20	25	32	40	50
D		10	10	15	20	24.5	30	40	50
L1		42	43	54	63	72	82	94	114
L2		10.5	11	13.5	15.5	17.5	19	19	23.5
L3		89	89	98.5	98.5	125	140	140	165
H		39	39	48	52	60.7	74.5	82.5	92.5

Revision

Revision	Remarks	Date Revision	Revision By	Approved By
△				
△				
△				
△				
△				
△				
△				

Dimension Unit In MM
General Tolerances Unless Specified
X = ±0.5
.X = ±0.1
.XX = ±0.05
Angle Tolerance ±0.15°
Scale: 1:5

Part No :
Description : GA DRAWING
Material :
Finishing :
Model No :
Product : BRASS BALL VALVE AF600 PN40, 600 WOG, FULL BORE FORGED BRASS, 2 PCS BODY

Drawn By : ABDULLAH FAHMI
Approved By : ONG
Date :
Qty : 1 SET





JABATAN KESELAMATAN DAN KESIHATAN PEKERJAAN MALAYSIA
DEPARTMENT OF OCCUPATIONAL SAFETY AND HEALTH MALAYSIA

DILULUSKAN / APPROVED

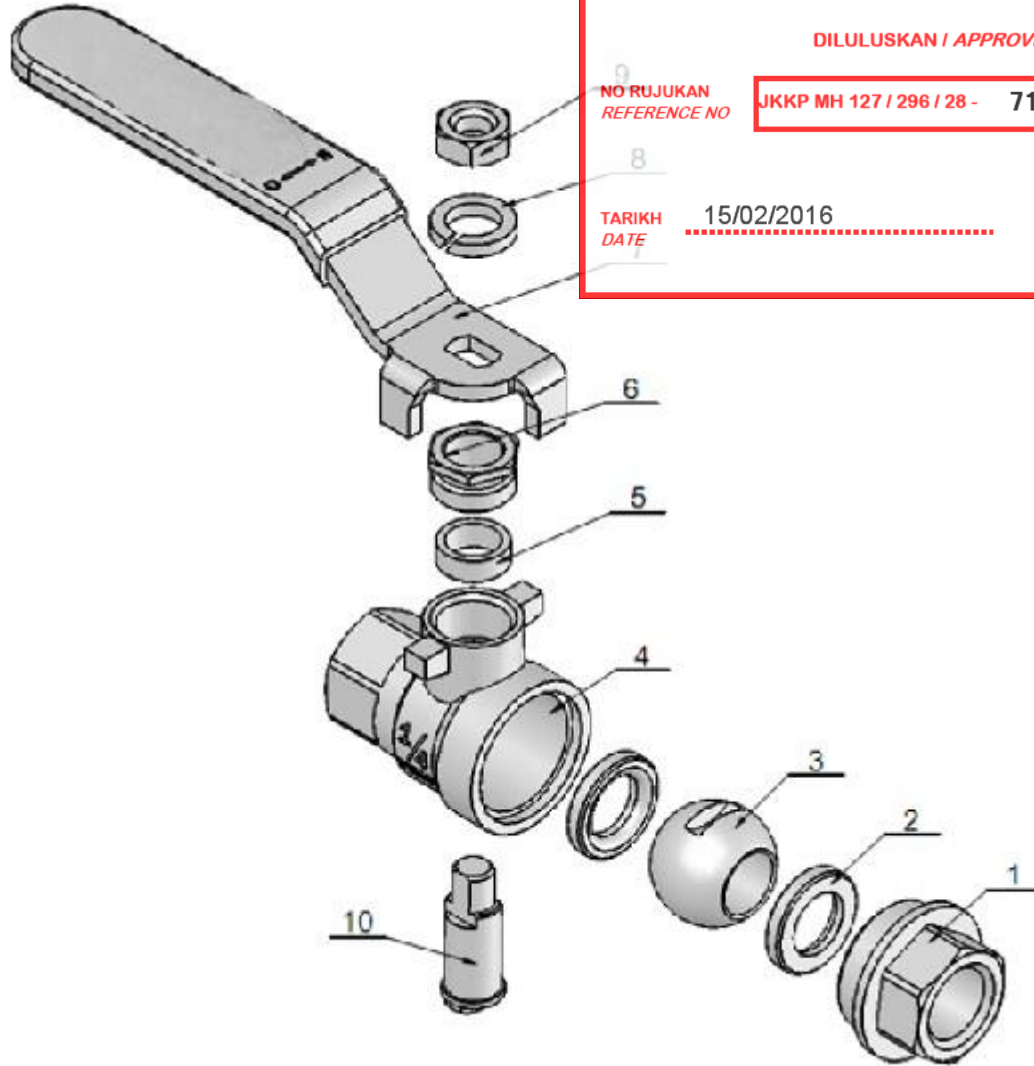
NO RUJUKAN
REFERENCE NO

JKKP MH 127 / 296 / 28 - 71(2)

TARIKH
DATE

15/02/2016

b.p KETUA PEMERIKSA
o.b CHIEF INSPECTOR



Materials

No.	Part	Material
1	Bonnet	Brass
2	Ball Seat	PTFE
3	Ball	Stainless Steel
4	Body	Brass
5	Packing Gland	PTFE
6	Packing Nut	Brass
7	Handle	C.P. Steel
8	Gasket	Steel
9	Packing Nut	N.P. Steel
10	Stem	Brass

- 7
- 6
- 5
- 4
- 3
- 2
- 1

Dimension Unit In MM
 General Tolerances Unless Specified
 X = ±0.5
 .X = ±0.1
 .XX = ±0.05
 Angle Tolerance ±0.15°

Part No :
 Description : **EXPLODED VIEW**
 Material :
 Finishing :
 Model No :
 Product : **BRASS BALL VALVE AF600 PN40, 600 WOG, FULL BORE FORGED BRASS, 2 PCS BODY**

Drawn By : **ABDULLAH FAHMI**
 Approved By : **ONG**
 Date :
 Qty : **1 SET**



Revision	Remarks	Date Revision	Revision By	Approved By

Scale: **1:5**