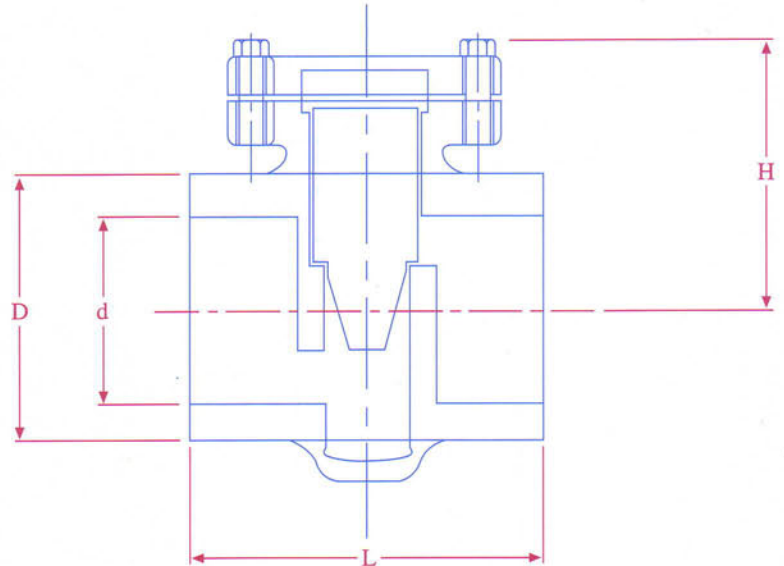




## Class 800 Forged Steel Check Valve

Model: FSC-800



### Materials

Parts	Q'TY	ASTM Materials
Body	1	A105
Seat	1	Stellite Overlay
Disc	1	A276-410
Gasket	1	SUS 304
Cover	1	A105
Bolt	4	A193-B7
Spring	1	Stainless Steel

### Features

End Connection: (i) Threaded ends to BSPT (BS21) or NPT (ANSI B1.20.1) (ii) Socket Weld (ANSI B16.11)
Face-to-Face or End-to-End: ARITA Standard
Wall thickness: ARITA Standard
Working pressure: 50 kgf/cm <sup>2</sup> (800 psi)
Application: Water, Oil, Gas and Steam

Hydrostatics shell test 1200psi

Pneumatic seat test 80psi

### Dimensions

SIZE	inch	1/2	3/4	1	1 1/4	1 1/2	2
	mm	15	20	25	32	40	50
<b>d</b>		19	23	29	38	44	56
<b>D</b>		36	40	49	59	66	79
<b>L</b>		79	92	111	120	152	172
<b>H</b>		60	61	79	82	103	120